

2010 marks the 50th anniversary of the National Trust in Tasmania

and a renewed life cycle of the organisation dedicated to actively engaging with communities and stakeholders throughout Tasmania in an evocative and relevant manner with a positive and beneficial lasting impact.

This responsibility has been actively embraced by the National Trust's Board, Members, Volunteers and staff and will ensure we present Trust properties as living, breathing, vibrant places that belong as much in the present as in the past.

AN INSPIRATIONAL VISIONARY

Widely regarded as one of Australia's greatest early colonial houses, 'Clarendon' is a unique and treasured Tasmanian icon.

Built in 1838 the house was an extraordinary statement of achievement by James Cox who establishing an agricultural enterprise that extended over 18,000 acres on some of the most productive land in the colony.

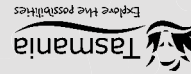
James Cox's agricultural enterprises prospered at a time when northern Tasmania was the food bowl for Australia exporting large quantities of grain not only to New South Wales but also India, Mauritius and the Cape Colony. As well as growing grain Cox was involved from the beginning in the development of the fine wool industry in the state having imported merino rams from both the Macarthur stud in New South Wales and directly from Europe.

Agricultural buildings on the massive site include a brick shearing shed, stone threshing barn, an impressive brick coach house and adjoining terrace accommodation for servants and farm workers.

Although Cox did use convicts both as servants and farm workers, by the 1830s he was actively seeking free employees, often engaging them in England despite the considerably greater expense. His increasing aversion to transportation and the use of convicts saw him play a very public role in the anti-transportation movement in the 1840s including chairing a number of critical public meetings that sought the cessation of transportation to the island.



National Trust
of Australia
(Tasmania)



'Connecting Rural Communities at Clarendon' would not be possible without the project support of:

A broad range of organisations are involved and committed to the success of this innovative state wide event including:
Department of Primary Industries, Parks, Water and Environment (DPIPWE) - Forestry Tasmania, Dairy Centre of the Tasmanian Institute of Agricultural Research (TIAR), UTAS, Truffles Australia, Sheep Connect Tasmania, TWIA,
Rural Youth Organisation of Tasmania, Wasabi Growers Association, Beyond Blue, TFGA, Cancer Council, Department of Health and Aged Services, Country Women's Association, Royal Flying Doctors Service, RAW Tas and Heritage Tasmania.
The Drysdale Institute in partnership with the Agrarian Kitchen and the Red Feather Inn are putting together a 'Paddock to Plate' program.
Entertainment on Sunday will include: Archery, Croquet, Horse and Carriage display, Steam Engine display, Irish Music, Colonial Strollers, Lace Making Demonstrations
A cricket match between school teams from urban and rural communities

CONNECTING RURAL COMMUNITIES — at Clarendon —

An event highlighting the many issues facing rural communities in Tasmania with many topics having national relevance and significance.

- Entertainment activities • Professional presentations • Panel discussions • Educational programs • Information sessions and demonstrations all set against the powerful backdrop of 'Clarendon', a unique and treasured Tasmanian agricultural icon.

NOVEMBER 5, 6 & 7, 2010 (10am-4.30pm daily)

CONNECTING RURAL COMMUNITIES at Clarendon

WHAT'S ON AND WHEN - YOUR GUIDE TO GETTING CONNECTED

On the 5th, 6th and 7th November 2010, The National Trust of Tasmania is hosting one of Tasmania's most important events of the year at Clarendon.

'Connecting Rural Communities at Clarendon' will highlight the many issues facing rural communities in Tasmania with many topics having national relevance and significance. The event also aims at providing a platform for urban communities to gain an understanding of these issues.

There is no cost to attend information sessions in the jammed packed program organised by the National Trust in partnership with the Tasmanian Farmers & Graziers Association and the Department of Primary Industries, Parks, Water and Environment (DPIPWE)

The program includes professional presentations, panel discussions, educational programs, information sessions and demonstrations as well as a range of entertainment activities all set against the powerful backdrop of 'Clarendon' a unique and treasured Tasmanian agricultural icon.


Topics covered will include such things as the processes involved in food production, emerging boutique markets, organic farming, viticulture, farm management deposits, the Tasmanian wool and dairy industries, legislation / restrictions and regulations, retailing, farm gate initiatives and a wide range of health related issues ranging from depression to the availability of GPs.

PROGRAMME

professional presentations, panel discussions, educational programs, information sessions...

Your key to getting around Clarendon...		Toilets
1. Shearing Shed	7. Main House	M Male
2. Threshing Barn	8. Walled Garden	F Female
3. Kathleen Menzies Room	9. West Courtyard	D Disabled
4. Coach House	10. West Lawn	
5. Cellar Room (in Main House)	11. Parkland	

1
SHEARING SHED
Friday, 5th November




- 10.00am-11.00am: **Beyond Blue**
CEO, Leonie Young
- 11.30am-12.30pm: **Tas. Institute of Agricultural Research**
Warren Hunt
- 2.00pm-3.00pm: **Beyond Blue**
CEO, Leonie Young
- 3.30pm-4.30pm: **Tas. Institute of Agricultural Research**
Warren Hunt

- Saturday, 6th November**
- 10.00am-11.00am: **Cancer Council**
 - 11.30am-12.30pm: **Royal Flying Doctors Service**
Lindsay Millar OAM
 - 2.00pm-3.00pm: **Cancer Council**
 - 3.30pm-4.30pm: **Royal Flying Doctors Service**
Lindsay Millar OAM

- Sunday, 7th November**
- 10.00am-11.00am: **RFCS Tasmania**
Elizabeth Skirving
 - 11.30am-12.30pm: **UTAS School of Ag. Science**
Prof. Richard Doyle
 - 2.00pm-3.30pm: Discussion Panel*

2
THRESHING BARN
Friday, 5th November



- 10.00am-11.00am: **TWIA**
- 11.30am-12.30pm: **Rural Youth Organisation of Tas**
- 2.00pm-3.00pm: **TWIA**
- 3.30pm-4.30pm: **Rural Youth Organisation of Tas**

- Saturday, 6th November**
- 10.00am-11.00am: **Rural Alive & Well**
CEO, Vyv Alomes
 - 11.30am-12.30pm: **TFGA**
CEO, Jan Davis
 - 2.00pm-3.00pm: **Rural Alive & Well**
CEO, Vyv Alomes
 - 3.30pm-4.30pm: **RFCS Tasmania**
Elizabeth Skirving

- Sunday, 7th November**
- 10.00am-11.00am: **TFGA**
CEO, Jan Davis
 - 11.30am-12.30pm: **DPIPWE**
Andrew Bailey
 - 2.00pm-3.30pm: Discussion Panel*
 - 3.45pm-4.30pm: **Dairy Centre (TIAR)**
Mark Smith

3
KATHLEEN MENZIES ROOM
Friday, 5th November



- 10.00am-11.00am: **Country Women's Assoc.**
- 11.30am-12.30pm: **Rural Skills Australia**
Roger Tyshing
- 2.00pm-3.00pm: **Country Women's Assoc.**
- 3.30pm-4.30pm: **TFGA**
CEO, Jan Davis

- Saturday, 6th November**
- 10.00am-11.00am: **Wasabi Growers Assoc.**
Melina Parker
 - 11.30am-12.30pm: **Truffles Australis**
 - 2.00pm-3.00pm: **Wasabi Growers Assoc.**
Melina Parker
 - 3.30pm-4.30pm: **Rural Skills Australia**
Roger Tyshing

- Sunday, 7th November**
- 10.00am-11.00am: **DPIPWE**
Alexandra Mitchell
 - 11.30am-12.30pm: **DPIPWE**
Craig Williams
 - 2.00pm-3.30pm: Discussion Panel*
 - 3.45pm-4.30pm: **DPIPWE**
Alexandra Mitchell

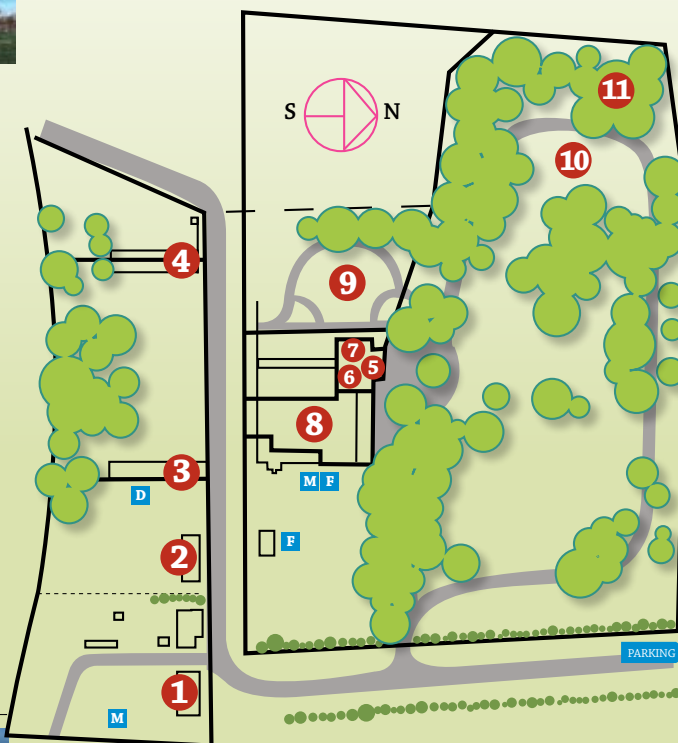
4
COACH HOUSE
Friday, 5th November



- 10.00am-11.00am: **RFCS Tasmania**
Elizabeth Skirving
- 11.30am-12.30pm: **Dept. Health & Aged Services**
- 2.00pm-3.00pm: **Aust. Red Cross**
- 3.30pm-4.30pm: **Dept. Health & Aged Services**

- Saturday, 6th November**
- 10.00am-11.00am: **DPIPWE**
Peter Ball
 - 11.30am-12.30pm: **Josef Chromy Wines**
Jeremy Dineen
 - 2.00pm-3.00pm: **Aust. Red Cross**
Linda Richardson
 - 3.30pm-4.30pm: **Josef Chromy Wines**
Jeremy Dineen

- Sunday, 7th November**
- 10.00am-11.00am: **Aust. Red Cross**
Linda Richardson
 - 11.30am-12.30pm: **DPIPWE**
Robin Thompson
 - 2.00pm-3.30pm: Discussion Panel*
 - 3.45pm-4.30pm: **Rural Skills Australia**
Roger Tyshing



- 5 CELLAR ROOM 1**
Fri. 5th & Sat. 6th November
- 10.00am-11.00am;
 - 11.30am-12.30pm;
 - 2.00pm-3.00pm;
 - 3.30pm-4.00pm.
- DPIPWE**
Craig Williams

- CELLAR ROOM 2**
Saturday, 6th November
- 10.00am-11.00am: **Heritage Tas**
Ian Boersma
 - 11.30am-12.30am: **Heritage Tas**
Ian Boersma

FUN FOR THE WHOLE FAMILY! SUNDAY ACTIVITIES & ENTERTAINMENT INCLUDE...

- 7 CLARENDON HOUSE**
Botanical Artists, Lace making demonstrations, Music - Drawing Room, Colonial Strollers
- 8 WALLED GARDEN**
French Polishing
- 9 WEST COURTYARD**
Croquet
- 10 WEST LAWN**
Archery
- 11 PARKLAND**
Longford Morris Dancers, Horse & Carriage, Save the Devil, Steam Engines, Country v Rural Cricket Match, Irish Music.

PADDOCK TO PLATE:

Throughout Sunday, students from the Drysdale Institute, in partnership with leading Tasmanian restaurant owners, will be demonstrating the preparation and presentation of dishes highlighting the fine produce Tasmania delivers to the rest of the world

*Discussion Panel - Sunday, 7th November (2.00pm-3.30pm)
'What will Tasmanian Agriculture look like in 2030?'

For full programme details visit www.nationaltrust.org.au or www.tfga.com.au